



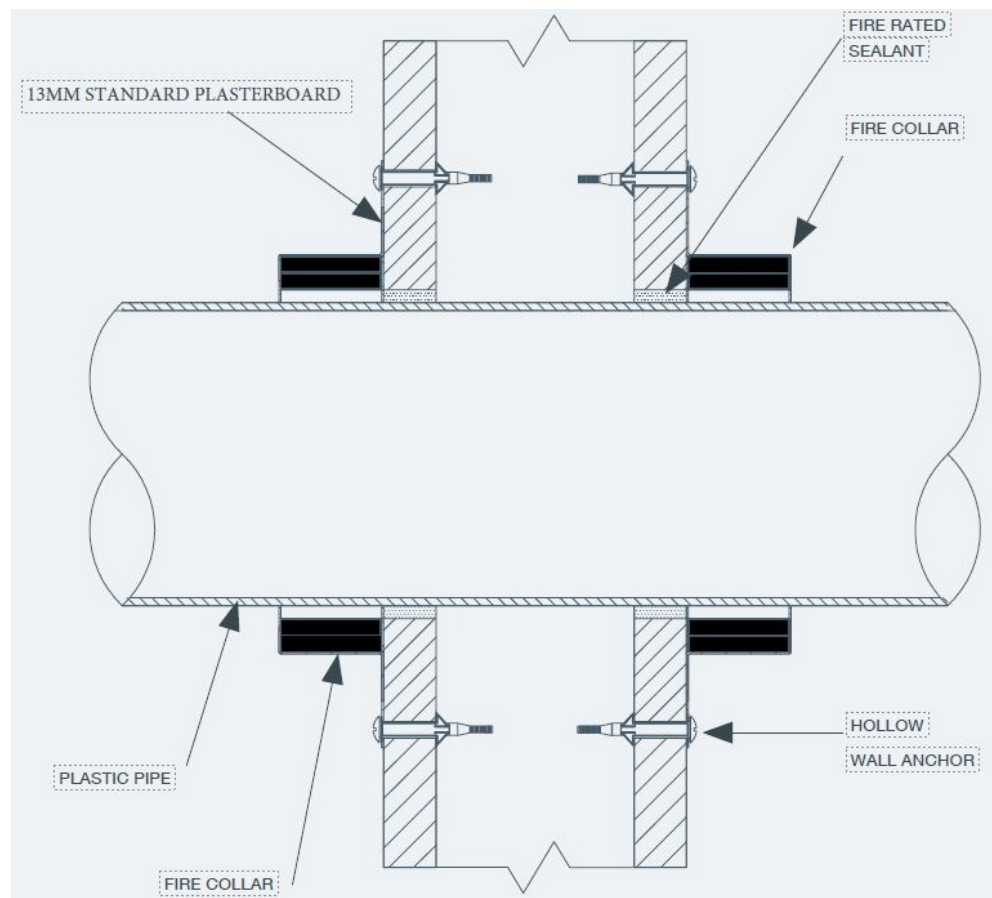
FIRESTOP CENTRE

Authorised New Zealand Distributor
Ph (09) 483 4000 www.firestopcentre.co.nz

Allproof Low Profile Fire Collar Plastic Pipe through 1x13mm Standard (Non-fire) Plasterboard Wall See Page 2 for details

INSTALLATION INSTRUCTIONS:

1. Ensure substrate around the service is flat and free from obstructions.
2. Seal the annular space between the plasterboard and the pipe with Allproof MAS310 fire sealant to the depth of the plasterboard.
3. Open pipe collar and position around the service.
4. Slide tab through slot in pipe collar and fold back 180° to secure.
5. Secure collar using metal hollow wall anchors or dog pan head screws (see Pg 2) fixed directly into the plasterboard. Do not use fixings which rely on plastic or nylon components for grip.



BRANZ Appraised
Appraisal No.1088 [2019]

As a part of our policy of on-going product development and testing, we reserve the right to modify, alter or change product specifications without giving notice. All information contained in this document is given in good faith and is provided for guidance only. Any drawings provided are for illustrative purposes only. As Firestop Centre has no control over the methods or competence of installation and of prevailing site conditions, no warranties, expressed or implied, is intended to be given as to the actual performance of the product mentioned or referred to herein and no liability whatsoever will be accepted for any loss, damage or injury arising from the use of the information given.

For all technical details on the products specified please refer to the technical data sheets that can be found on www.firestopcentre.co.nz

Signed and approved:



BRANZ Appraisal 1008
Technical Manual - Plumbing
Page 20
AS1530.4-2014 AS4072.1-2005

System ID# FC523

Products	Allproof Low-Profile Fire Collar
Application	Fire stopping of plastic pipe in 1x13mm Std plasterboard wall
Construction	Minimum wall thickness 90mm with single layer 13mm Std (Non-fire) plasterboard each side

Fire Classification:

See page 2 for details of pipe types, sizes and FRR ratings for:

PVC up to 100mm diam

Polybute up to 25mm diam

PEX up to 25mm diam

PP-R up to 32mm diam

Max FRR -/30/30 for all systems limited by FRR of 13mm Std p'bd wall.

ALLPROOF INDUSTRIES

Allproof Industries Ltd
17 Bay Park Place
Beach Haven, AK 0626

Sheet size: A4	Drawn date & no: 28/5/25
Scale: NTS	Drawn by: G.P

STANDARD NON-FIRE RATED 13MM PLASTERBOARD WALL TEST RESULTS:

NOMINAL PIPE SIZE (MM)	NOMINAL PIPE WALL THICKNESS (MM)	PRODUCT CODE	PENETRATION HOLE SIZE (MM)	PLASTERBOARD WALL FRL*	REPORT NUMBER
PVC PLASTIC PIPE					
40	2.5	ALLFC40	52	-/30/30	13088
50	2.5	ALLFC50	67	-/30/30	13088
80	3.1	ALLFC80	92	-/30/30	13088
100	3.5	ALLFC100	117	-/30/30	13088
OTHER PLASTIC PIPE					
20 PEX	3.2	ALLFC25	25	-/30/30	13088
20 PB	2.4	ALLFC25	25	-/30/30	13088
32 PP-R (SDR 11)	3.7	ALLFC40	38	-/30/30	13088

Tested using a 92mm wide steel stud with a single layer of 13mm standard non-fire rated plasterboard on each side of the frame. A total wall thickness of 118mm. Fire collars are fixed using hollow wall anchors directly into plasterboard - not fixed into framing or studs in wall. Fire rated sealant is applied in the space between the pipe and plasterboard on both the exposed and unexposed face.

NOMINAL PIPE SIZE (MM)	NOMINAL PIPE WALL THICKNESS (MM)	PRODUCT CODE	PENETRATION HOLE SIZE (MM)	PLASTERBOARD WALL FRL*	REPORT NUMBER
PVC PLASTIC PIPE					
65	2.7	ALLFC65	72	-/30/30	148639
OTHER PLASTIC PIPE					
16 PEX	2.0	ALLFC25	19	-/30/30	148639
25 PEX	2.9	ALLFC25	30	-/30/30	148639
16 PB	2.0	ALLFC25	20	-/30/30	148639
25 PB	2.3	ALLFC25	32	-/30/30	148639

Tested using a 64mm wide steel stud with a single layer of 13mm standard non-fire rated plasterboard on each side of the frame. A total wall thickness of 90mm. Fire collars are fixed using 6.5mm x 32mm dog pan head screw anchors directly into plasterboard - not fixed into framing or studs in wall. Intumescent sealant is applied in the space between the pipe and plasterboard on both the exposed and unexposed face.